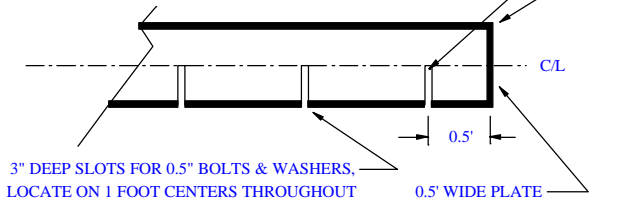
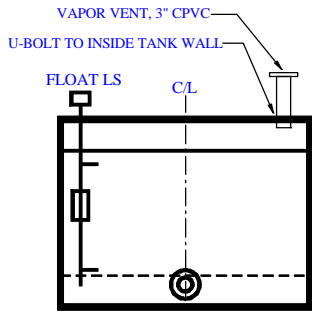


PLACE TO EDGE OF BAFFLE AND
MATCH DRILL MACHINE BOLT HOLES;
CUT AND PLACE SEAL GASKET END TO END;
POSITION AND LEVEL WEIR EDGE;
BOLT THE ASSEMBLY IN PLACE.

LENGTH @ FULL TANK WIDTH,
TOP STRAIGHT EDGE @ +/- 0.03' END TO END

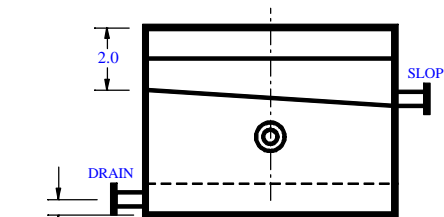


WEIR DETAIL
(TYPICAL FOR ALL)

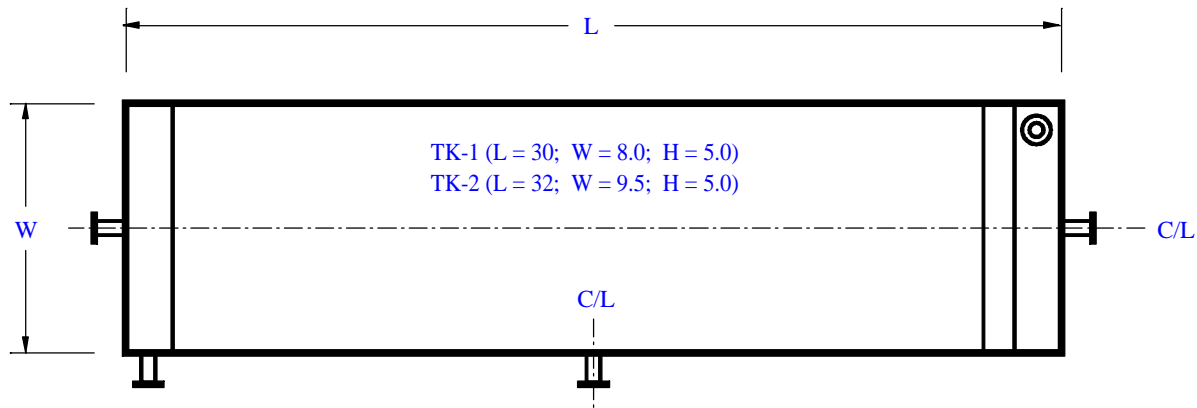


BACK VIEW

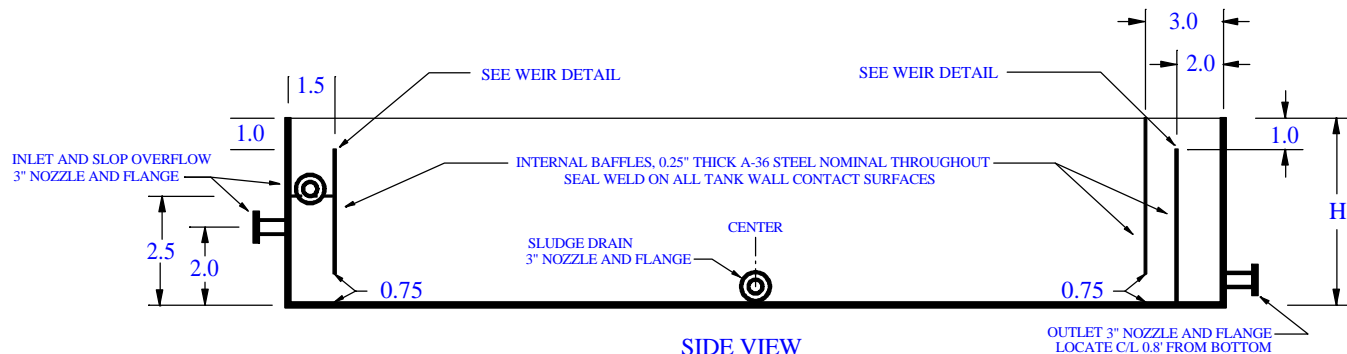
NOTE: MAKE EACH UNIT
LEFT OR RIGHT HANDED
DEPENDING ON FIELD
SITE ARRANGEMENT.



FRONT VIEW



PLAN VIEW



SIDE VIEW

TK-1 AND TK-2
API SEPARATOR, GILLETTE, WY
H. CORBIN, WCA, 5/18/98

H. CORBIN, P.E. - MAY, 1998
TEMPORARY SYSTEM IN OPERATION